

**WEST BENGAL GRAMIN BANK**

REGIONAL OFFICE : HOOGHLY

Nilanjana Complex, Bankim Kanan, Chinsurah Station Road P.O. Chinsurah R.S., Dist.- Hooghly, Pin Code- 712102

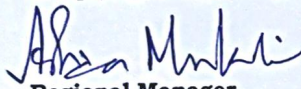
**Tender Notice****Date: 08/07/2025**

Sir,

West Bengal Gramin Bank, Regional Office – Hooghly invites application cum sealed quotations from authorized experienced vendors for the **Electrical & Lan Work** at new premises of West Bengal Gramin Bank – Hooghly Regional Office, as per schedule (B.O.Q) & enclosed layout. Interested suppliers are requested to submit the quotation in sealed envelope at Regional Office – Hooghly, Chinsurah as per below mentioned notice.

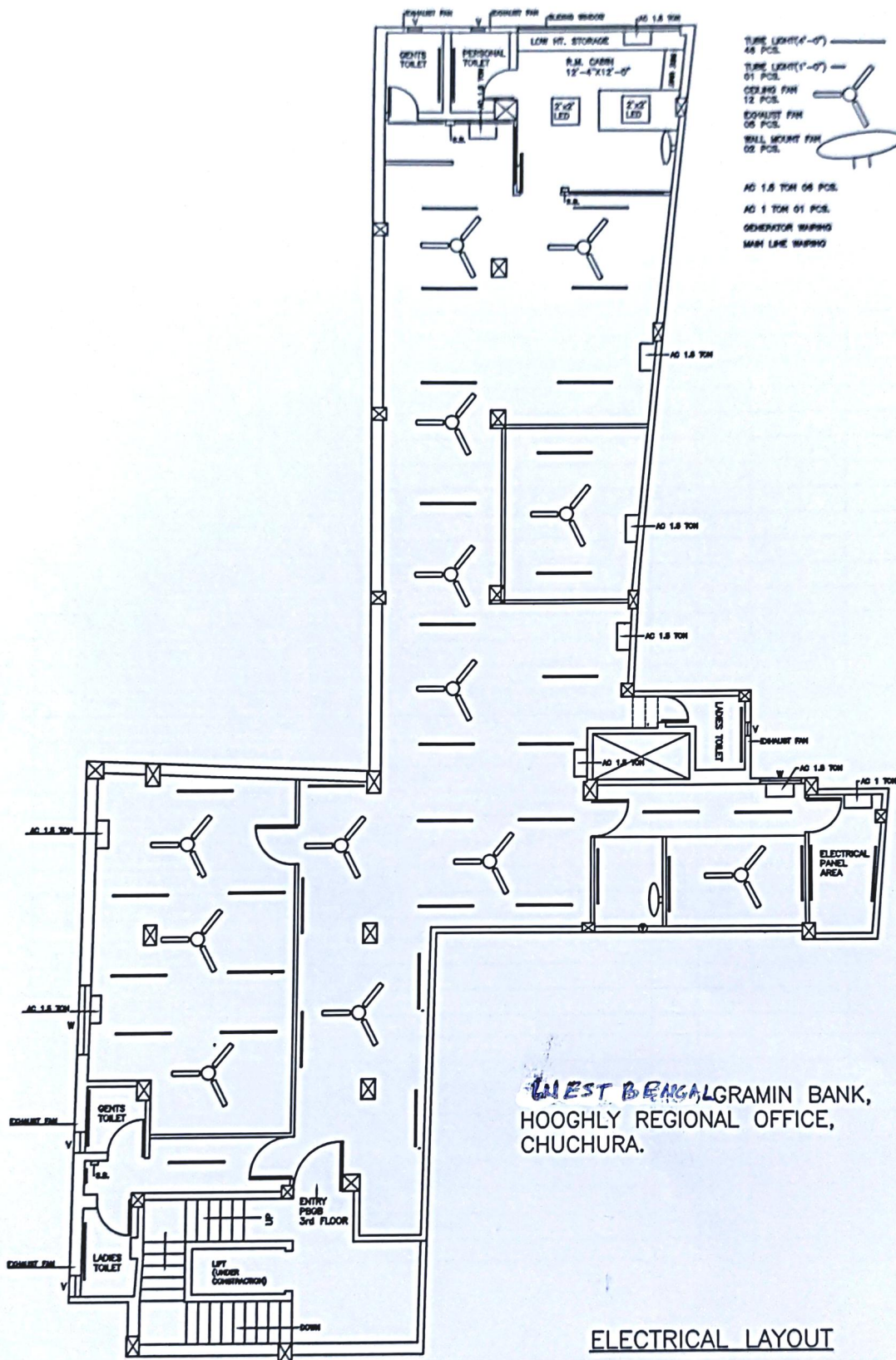
Name & Location of Work	<b>Electrical &amp; Lan work</b> at 2nd Floor of <b>West Bengal Gramin Bank – Hooghly Regional Office</b> , new premises located at Dharampur Segun Bagan, Khadinamore, G T Road, P.O- Chinsurah, Hooghly, 712101.
Time allowed for completion	20 days including Sundays & holidays.
Last date of submission of tender.	Within 1:00 pm 30/07/2025. Tender open date –30-07-2025 at 3.00 PM
Point of Submission	Manager (AGA) West Bengal Gramin Bank – Regional Office Nilanjana Complex, Bankim Kanan, Chinsurah Station Road, Chinsurah Hooghly -712102
Earnest Money Deposit (EMD)	2% of the estimate value. (Deposit should be submitted in the form of Demand Draft in favour of Paschim Banga Gramin Bank, payable at Howrah, inside the sealed envelope.)
Defective Liability Period	12 months from the date of actual completion of work.
Validity of Offer	3 months from the date of opening of price bid.
Security Deposit	5% of the estimate rate.
Liquidated Damages	0.5% per week subject to maximum of 5% of contract value.
Approximate Estimated Cost Of The Project	Quoted Rate + Applicable GST
Documents required to be submitted along with the quotation within the sealed envelope.	Envelope-1 (Technical Bid) 1 Xerox copy of - Latest Trade License, PAN card, GST Registration Certificate & P-tax. 2 ITR of FY- 2023-24, 2022-23, 2021-22. 3 GST Return (GST-1/GST-3) for FY-2024-25. Envelope-2 (Commercial Bid/Price Bid) 4 Prior experience certificate, if any or related papers. 5 Demand Draft. The aforementioned envelopes should be inserted inside a big envelope & to be submitted within the due date at designated office.

**Any issue to be raised by the participating vendors would be allowed only at the time of opening of tender, at the discretion of the Bank. West Bengal Gramin Bank** has the right to accept/reject any/all quotation(s) without assigning any reason.

  
**Regional Manager**  
**West Bengal Gramin Bank**  
**Hooghly Regional Office**  
**Chinsurah, Hooghly**









## BOQ FOR ELECTRICAL WORKS

SL. NO.	PARTICULAR	QTY	UNIT	RATE	AMOUNT (Rs.)
1	<b>Part 1 : LIGHT POINT WIRING</b>				
	Supply, laying, connection & testing of light, fan point, wiring by 2x1.5mmsq(2x3/.029) + 1x1mmsq PVC insulated copper flexible wire maintaining the colour code as per direction in PVC conduite of 20mm with ISI mark 1.5mm wall thk. to conceal in wall partition mending good the damage, complete with pvc circular box, bend to be done as per drawing including 3 point ceiling rose wherever required. GI saddle to be used for fixing, pvc conduite / flexible pipe may use if required in partition wall. All pvc pipes should be with ISI mark. No joints will be allowed inside pipe, light, fan & plug point complete with modular type switch plate & MS box. Including the main circuit line 2x 2x2.5mmsq+1x1.5mmsq earth PVC insulated Cu. Wire, maintaining the colour code. Circuit line for lighting switch board, 6Amps plug board are to be drawn from lighting DB to Lighting board & plug point board, 6/16 Amps plug point line are to be drawn from power DB. 3Nos lighting board, 03 Nos. 6Amps plug are to be connected from one circuit & 02 Nos. 6/16 plug to be connected from one circuit (Lighting S. Board height from floor 32" bottom level of S. Board.).				
a)	Lighting point complete with modular type switch, plate, M.S. conceal box.				
	Point - 1 Light point control by 01 switch.	25	Nos		
	Point - 2 Light point control by 01 switch.	19	Nos		
b)	Exhaust fan point same as item No. 1a complete with modular type switch plate & MS conceal box & 3 pin ceiling rose.	6	Nos		
c)	Wall bracket fan point as above complete with modular type switch, plate & M.S. conceal box. Including one 2pin plug socket, front plate & conceal box at fan end. Ht at 6'6" .	3	No.		
d)	Ceiling fan point as above complete with modular type switch, modular plate & conceal box.				
	The rate is inclusive of 300 W electronics regulator.	13	Nos.		



e)	Call bell point same as above complete with modular type push switch, plate & M.S. conceal box with Din - Dong type bell.	1	No.		
f)	Single light point to connect from UPS power complete with modular switch plate and M.S. box connect from UPS DB	8	Nos.		
	<b>Total Of Part 1</b>				
<b>2</b>	<b>Part : 2 RAW POWER WIRING</b>				
a)	Supply Laying of Circuite line 2x2.5mmsq +1x 1mmsq PVC insulated copper wire form L.Db to 6Amps Plug point. Also note that 03 Nos 06 amps Plug to be connected from one circuite line. rest are same as item No 1.	550	Mts		
b)	Supply Fixing & connection of modular type 6 amps Plug switch complete with Ms box Socket switch above table at 32" height fr. Floor.	8	No.		
c)	16 Amps 6pin socket with 16amps switch for raw/UPS power point. ( 02 Nos plug connected from one circuite.)rest as item no 1	6	No.		
d)	Supply Laying of Circuite line 2x2.5mmsq +1x 1mmsq PVC insulated copper wire form L.Db to 16Amps Plug point & inverter. rest are same as item No 1.	180	Mts		
	<b>Total Of Part 2</b>				
<b>3</b>	<b>Part : 3 TELEPHONE WIRING.</b>				
a)	Supply laying & connection of same as item no.1 but with 2 pair 0.51mmsq tinned CU. conductor through PVC regid ISI mark pipe from telephone point to Korne DB complete with RJ - 11 telephone socket modular type in MS conceal box. under table at 22" Ht.+ one telephone point near HUB Rack	3	No.		
b)	Supply & fixing & connection of Cat -5 cable from VSNL D.B to HUB rack through separate pipe for Lease line & ISDN line.(02 Line)	60	Mt.		
c)	10 pair .51mmsq copper conductor telephone cable in 20mm dia PVC pipe from VSNL D.B to 30 pair KORN connector.	35	Mts		
d)	Supply fixing & connection of 10 pair KRONE connector DB complete with PVC moulded Telephone DB box with locking system.	1	Set		
	<b>Total Of Part 3</b>				



4	<b>Part : 4 SUPPLY, FIXING &amp; CONNECTION</b>				
	<b>of LIGHT FITTINGS with Lamp / FANS :</b>				
i	<b>Supply Installation, testing &amp; commissioning of</b>				
	Supply Installation, testing & commissioning of 595x595mm 36W 5700K				
	spec base LED panel lights of CRCA housing of approved make				
	To hang from true ceiling by 25x3 mm M.S flat with nuts and bolt as	2	Nos.		
ii	Supply,Installation, testing & commissioning of 4'-0" long 22W 5700K				
	batten light comprising of extruded Al housing ith PC Diffuser , PC				
	& spring steel clamps for surface mounting arrangement of approved	45	Nos.		
iii	Supply,Installation, testing & commissioning of 15W 3000-6500K 139-				
	dia LED recessed down light comprising of casted Al housing with SS				
	for recessed mounting arrangements of approved make.	4	Nos.		
iv	Supply,Installation, testing & commissioning of				
	225 mm dia heavy duty Exhaust fan 230 volt				
	A.C. ( EPC / Crompton make).The rate is inclusive of				
	hole and necessary plastering. (Toilet & UPS room at gr. floor)	6	Nos		
v	Supply,Installation, testing & commissioning of high speed				
	Wall mountaing fan 400 mm dia 230 volt A.C.	3	Nos.		
vi	Supply, installation,testing and commissioning of LED red bulb				
	with holder & necessary PVC plate & box of approved make .	1	Nos.		
vii	Ceiling Fan 1200mm swift 230 V. A.C.(complete with)				
	Orient make modular type Electronic 400w Regulator.				
	" S" hook cutting with plastering and cable connection complete	13	No		
	<b>Total Of Part 4.</b>				
5	<b>Part : 5, UPS WIRING :</b>				
a)	Supply fixing & connection of UPS				
	circuite line with 2x2.5+1x1.5mmsq through				
	pvc conduite 20mmdia 16 SWG wall				
	tickness, with ISI mark, to lay from UPS MCB				
	DB to plug point board.rest same as item no.1				
	Two nos point to be connected from One				
	circuite .	198	Mts		
b)	Supply fixing of 2x6Amps 5 pin socket + 1x16				
	Amps 6 pin socket in single board (under				
	table) + 1x 16 A switch in another board				
	above table as per direction.(under table Ht22")	9	Set		
c)	- Do - but 3x6/16, 6pin socket with 3nos.16A switch to				
	provide near HUB rack& line printer, are				
	to be connected from UPS power. As per concul.6				
	one set for HUB + one set for line printer	2	Set		
d)	Supply laying & connection of UPS				
	incomming power line with 2x6mmsq +1x4mmsq				



	PVC insulated copper wire rest same as				
	item no. 1 from 1 no 3KVA UPS + 1nos 3KVA UPS				
	to 2 Nos. UPS MCB DB.	58	Mts		
e)	UPS outgoing power to down by 6mm 4Core				
	Cu. Conductor PVC insulated armoured cable with 2 nos				
	12 swg bare cu.wire along with cable.	35	Mt.		
f)	Supply & installation & termination of 40 Amps				
	DP MCB with Metal encloser for UPS out going				
	Line.including 2 nos 32 A,3pin metal plug with 40 A				
	DP MCB in separate box for 2 UPS	4	Nos.		
g)	Supply installation of UPS incoming				
	40 Amps 4 pole MCB MDS make .in MS encloser				
	as per instruction of consultancy. 2sets for 2 UPS	2	Nos.		
h)	Supply laying & connection of				
	lighting on/off line with 4x6mmsq +2x2.5mmsq				
	PVC insulated copper wire rest same as 1.	42	Mts		
i)	Supply installation and termination of UPS				
	outgoing power distribution system with				
	8Way SPN DB comprising 6x10Amps SP				
	MCB & 40 Amps DP RCBO 300MA as main.				
	MDS make IP -42 Double Door.	2	Nos		
	<b>Total Of Part 5</b>				
6	<b>Part : 6 LAYING OF CABLE :</b>				
a)	Supply laying fixing main power with 50 mm				
	sq 4 core PVC insulated,PVC sheated Alu.				
	Conductor, 1100 v. grade armoured cable				
	complete with 02 nos 8 SWG bare GI.wire as				
	running earth. (main power cable) &hardware				
	to take actual measurement before laying cable.	250	Mts		
b)	End termination of 35 mmsq 4 Core				
	armoured cable,complete with brass cable				
	gland , Alu. Lug, PVC tape. (Dewell's socket				
	& Arun make medium gland to be used.	4	End		
c)	Supply laying & connection of 4x16sqmm +1x4sqmm				
	PVC insulated copper wire through 32mm dia MMS PVC				
	rigid conduit for main meter loop & inter connection.	40	Mtr		
	<b>Total Of Part 6</b>				
7	<b>Part :7 MAIN ELECTRICAL Cubical type panel.</b>				
	<b>Floor / wall mounting type.</b>				
a)	Supply, fabricating,assembling,inter-				
	connection, testing & connecting with				
	incoming, out going power cables &				
	lines as required to complete the job of				



	cubical type electrical panel made from				
	14SWG CRC. M.S. sheet with proper				
	earthing terminal(Nut- bolt & washer) 02 No.				
	outside of panel, same nut- bolt to tighten				
	with internal earth busbar of panel situated				
	inside loose wire box(on top portion of				
	panel)On top side of panel cable entry				
	arrangement to be done for incoming				
	& out going of lines. Painting powder				
	coating electrical grey/ siemens grey to be done.				
	one 6"x4" enamel type 440Volt Danger board				
	to fix up on main panel bus-bar cover, components				
	are as follows :-All switches are front handle				
	operated & all MCB knob should be visual, all				
	component to provide in separate compartment				
	only One DB in one compartment all door are				
	detach able type.with IP protection - 42.				
	100Amps 4pole MCCB, 35KVA. As main 01 No				
	100 Amps 4pole Cu. Bus Bar.300mm L .25x6mm 01 Set.				
	63Amps 4 pole Change over switch. 01 No.				
	63 Amps Four Pole MCB 02 Nos (One for				
	Gen. Set incoming power & one for spare				
	4way TPN MCB DB with				
	63 TP&N MCB as main ( POWER DB).				
	10-25Amps SP MCB - 8 Nos.+20A SP - 4Nos.				
	including Neutral Bar. 01 Set				
	4way TPN MCB DB with				
	40 TP&N MCB as main (LIGHTING DB).				
	16 Amps SP MCB - 04 Nos.				
	+ 10 Amps SP MCB - 08 Nos.				
	including Neutral Bar. 01 Set				
	Amps Meter 0-100 Amps 96x96mm with 3 Nos.				
	CT & selector switch 01 Set				
	(CT ratio 100/5 Amps). AE make.				
	Volt meter 0-500volt A.C. 50 Hz.96x96mm				
	with selector switch. AE make.n 01 Set				
	22mmdia LED indicator lamp 09 Nos.				
	02 Amps D.Z. Fuse 06 Set.				
	150x100mm enamel Danger board 440 volt.				
	(to set on bus bar cover). 01 No.				
	40 Amps DP MCB (For 2 Nos UPS) - 2	1	Set		
b)	Supply,fixing and connection of 6"x6" M.S.Box				
	with brass batten holder + 1 nos 15W red lamp	2	Set		
c)	Supply, fixig & connection with S.M. housing 4 pole 40A MCB	1	No		
	for lighting on and off.				
	<b>Total of Part 7</b>				



8	<b>Part :8 EARTHING STATION :</b>				
a)	Earthing installation as per I.E. rule conforming to IS 3043-1987 or its latest amendent by making earth station with 600x600x3mm(mini-mun) thick copper plate electrode to be installed such that is top edge shall be at a minimum depth of 3.3mts below ground level after preparation of ground with charcoal, sand ,& salt, connecting the 25x3mm thick copper lead in strip (upto 10 mts length) by bolting and brazing to the copper plate complete with Brass bolt of suitable length double nuts & washer including supply & fixing of 40mm dia 2.3Mts long partly perforated G.I. Pipe with funnel for watering arragment.				
	<u>N.B :- The Copper plate to be buried under 3.3Mts depth from ground level, including C.I. Pit 300x300mm with necessary brick wall ( For UPS earthing).</u>	1	Set		
b)	SpikeEarthing with G.I. Electode 3mts. Longx50 mm dia (Class - B) including accessories and providing masonary enclosure with cover 300x300mm plate having locking arrangement and watering funnel Etc. with charcoal, sand & salt at alternate layer as required for electrical panal earthing.				
	For main electrical panel earthing.	2	No.		
c)	Supply laying 2x8SWG copper bear wire from earth spike to main panal.(Electrolite wire)	38	Mts		
d)	Do but with 1x16 mmsq insulated copper wire from earth spike to UPS earth bus bar through PVC regid 20mmdia ISI mark.	45	Mts		
	<b>Note : Photo of earthing &amp; report to be provided while submitting</b>				
	<b>Total Of Part 8</b>				
9	<b>Part : 9 A/C. ELECTRIFICATION :-</b>				
a)	Supply laying & connection of A/C. line for 1.5 TR/2.0 TR A/C. window / split with 2x4 + 1x2.5 mmsq through 16 SWG MS conduite with ISI Mark rest same item no 1.	450	Mts		
b)	Supply fixing of A/C. 18-25 Amps stator complete with 25 amps socket in modular type box.( Noth - West Make)for window unit For split unit plug socket to fixed near cooling unit & stator at 3.5 Ft from floor.	8	Nos		
	<b>Total of part 9</b>				



10	<b>Part : 10 OUTDOOR TYPE GLOW SIGN BOARD WIRING</b>				
a)	Supply laying of main line with 2x2.5 + 1x1.5 mmsq through MS conduite from main panel to glow sign board.	4/	Mts		
b)	Supply installation of 16 amps DP mcb at main entrance Glow sign board timer with contractor, 24 Hrs in original housing.	1	Set		
	<b>Total Of Part 10</b>				
11	<b>Part : 11 MAIN SWITCH</b>				
a)	Supply fixing of 100 Amps TPN HRC type SFU with enclosure at CESE for main incoming on MS angle.(Type-FN-125TPN) frame & 02 nos Cable end box including connection. L& T make	1	No.		
	<b>Total Of Part 11</b>				
12	<b>Part : 12 GEN SET WIRING</b>				
a)	Supply laying fixing main power with 25mm sq 4 core PVC insulated,PVC sheated Alu. Conductor, 1100 v. grade armoured cable complete with 02 nos 8 SWG bear GI.wire as running earth.	420	Mts		
b)	End termination of 25 mmsq 4 Core armoured cable,complete with brass cable gland , Alu. Lug, PVC tape.( Dewells socket to be used with Arun make gland)	4	End		
	<b>Total Of Part 12</b>				
14	<b>LAN WORKS</b>				
1	Supplying laying of Cat -6 wire through prelaid PVC rigid pipe from Switch to IO box. (Delink/Luncent make)	600	Mts		
2	Supplying laying of 25mm PVC pipe ISI mark in floor/wall/doodem partition for drawing Cat 6 cable from IO box to computer.	250	mts		
3	Supply fixing connection of IO box with front plate & RJ 45 socket under table. (DELINK make) .	28	Nos		
4	24 PORT 10/1000Mbps Giga bite Switch	2	No		
5	24 Port Jack Panel Make:-D-Link	2	No.		
6	12U rack with Glass Door , Locking system with 8 no power points & all necessary	1	No		
7	Mounting cord 7' 0"make D-Link	12	No		
8	Mounting cord 3' 0"make D-Link	12	No		



9	Labeling of each IO point patch panel end to end.	12	No		
	<b>Total Of Part 13</b>				
	<b>Summary Sheet</b>				
	Part 1 Light Point wiring.				
	Part 2 Raw power point.				
	Part 3 Telephone wiring.				
	Part 4 Light Fittings.				
	Part 5 UPS wiring.				
	Part 6 Distribution Of Cable.				
	Part 7 Main Power Panel.				
	Part 8 Earthing station.				
	Part 9 A/C Electrification				
	Part 10 Wiring Of Glow Sign Board.				
	Part 11 Main Incomming Switch Fuse Unit.				
	Part 12 Wiring of Gen - Set power.				
	Part 13 LAN Works				
	<b>GRAND TOTAL - C</b>				
	<b>Rs :-</b>				



WEST BENGAL GRAMIN BANK, HOOGHLY REGIONAL OFFICE					
BOQ FOR HVAC WORK					
HVAC WORK					
AIR-CONDITIONING WORKS :					
Sr.	SPLIT TYPE AIR CONDITIONERS				
A.	PART -A				
	HIGH SIDE WORK				
	Description	Unit	Quantity	Rate(Inclusive of GST@28%)	Amount
1	Supplying, erection, testing and commissioning following wall mounted Split/ Roof mounted cassette units of (Toshiba/ Mitsubishi/ Hitachi/ Daikin/LG/Bluestar/ Carrier/ Voltas) with cordless remote complete with all necessary fittings duly insulated with 9 mm thick nitrile rubber pipe insulation with (evaporator coil – copper only), fan and fan motor, machine control panel improved Refrigerant Joints, .Air conditioners shall be fitted with hermetically sealed type suction cooled reciprocating or discharge cooled rotary				
a	1.0 TR wall mounted split unit (Minimum 5-Star rating inverter type) including all necessary fittings and mountings as specified by the manufacturer.	Nos.	1.00		
b	1.5 TR wall mounted split unit (Minimum 5-Star rating inverter type) including all necessary fittings and mountings as specified by the manufacturer.	Nos.	7.00		
	PART A –HIGH SIDE WORK SUB TOTAL AMOUNT(Exclusive GST)				
	PART A –HIGH SIDE WORK SUB TOTAL AMOUNT(Inclusive @28% GST)				
B.	PART –B				
	LOW SIDE WORK				
1	EXTRA REFRIGERANT PIPING	Unit	Quantity	Rate(Exclusive of GST@18%)	Amount
	Supplying and laying of Extra copper				
a	For 1.0 T Split unit	Mtr.	30.00		
b	For 1.5 T Split unit	Mtr.	90.00		
2	DRAIN PIPING				



	Providing and fixing drain piping up to drain as directed by the engineer in charge with all accessories e.g. elbows, unions, sockets, reducers, reducing tees, nipples etc. Complete job including cutting chiseling in walls, fixing with GI clamps, floor and making good of all chases/cuts etc. and discharging the drain into a floortrap/ gully as per site conditions with insulation, both as specified by the				
a	25 mm dia PVC drain pipe for Split AC	Mtr.	200.00		
b	32 mm dia PVC drain pipe for Cassette AC				
c	40mm dia PVC drain pipe for Cassette AC				
3	<b>AUTOMATIC</b>				
	Stabilizer shall be Automatic version with copper coil transformer and the voltage selection range shall be minimum depending on lowest peak recorded average in a month. Precise output voltage range (130V-170V to 240V -270 V). Ensure the rating of Stabilizer shall be in accordance with max rated power of ACs considering instantaneous peak load fluctuation.				
	Providing and fixing Stabilizer with 3-4 step relay and input voltage range of 130- 270 V and output to be 230- 240 V (Blue bird/ Logic state/ Inline/ V-Gaurd/Equivalent Reputed Make)				
a	3 KVA (For 1.0/ 1.5 TR Split AC)	Nos.	8.00		
4	<b>AIR-CONDITIONERS STAND</b>				
1.	<b>MS-STAND</b> - Providing and fixing of lockable caging for outdoor unit grouted on wall or on roof with open able shutter made of 10 X 10 mm MS square bars placed vertically @ 5" c/c welded with 40 X 3 mm MS flat all- round. The frame shall be of angle 35mm*35mm and it shall be fixed to wall or roof with proper MS bracket to tackle the weight of outdoor unit. Item includes all necessary hardware, priming coat, synthetic enamel paint, hanger, clamps other accessories etc. All complete as per approval and instructions of the employer. Size shall be adequate for AC outdoor size & sufficient space around the outdoor suitable for servicing purpose.				
a	For 1.0 TR Hi Wall split units	Nos.	1.00		
b	For 1.5TR Hi Wall split units	Nos.	7.00		
5	<b>CORE CUTTING</b>				
a	Core cutting member in Non RCC 2 to 5 inches dia	Nos.	8		
<b>PART B –LOW SIDE WORK SUB TOTAL AMOUNT</b>					
<b>GRAND TOTAL (PART A + PART B) EXCLUDING GST</b>					
<b>TOTAL COST OF WORK</b>					